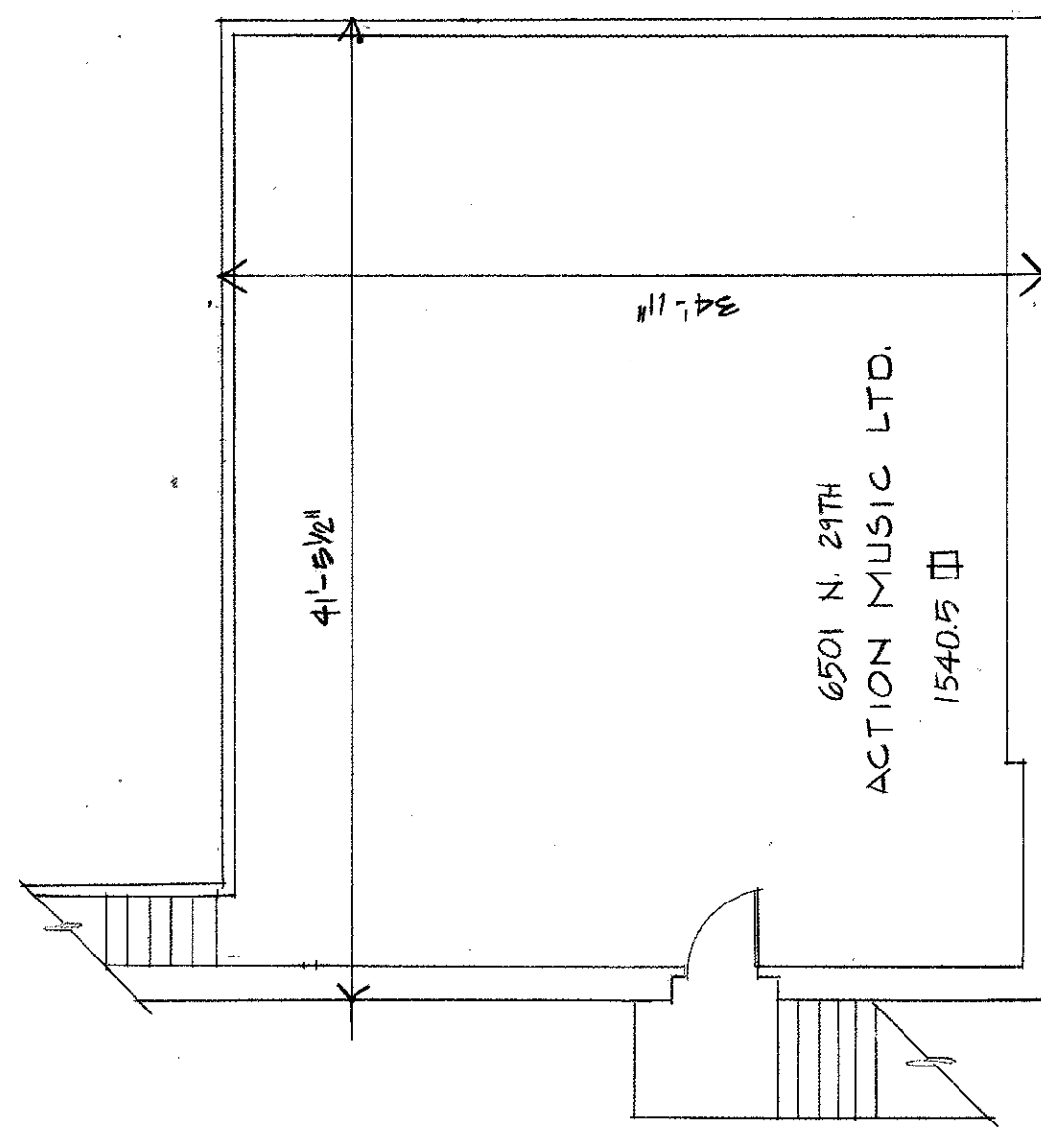
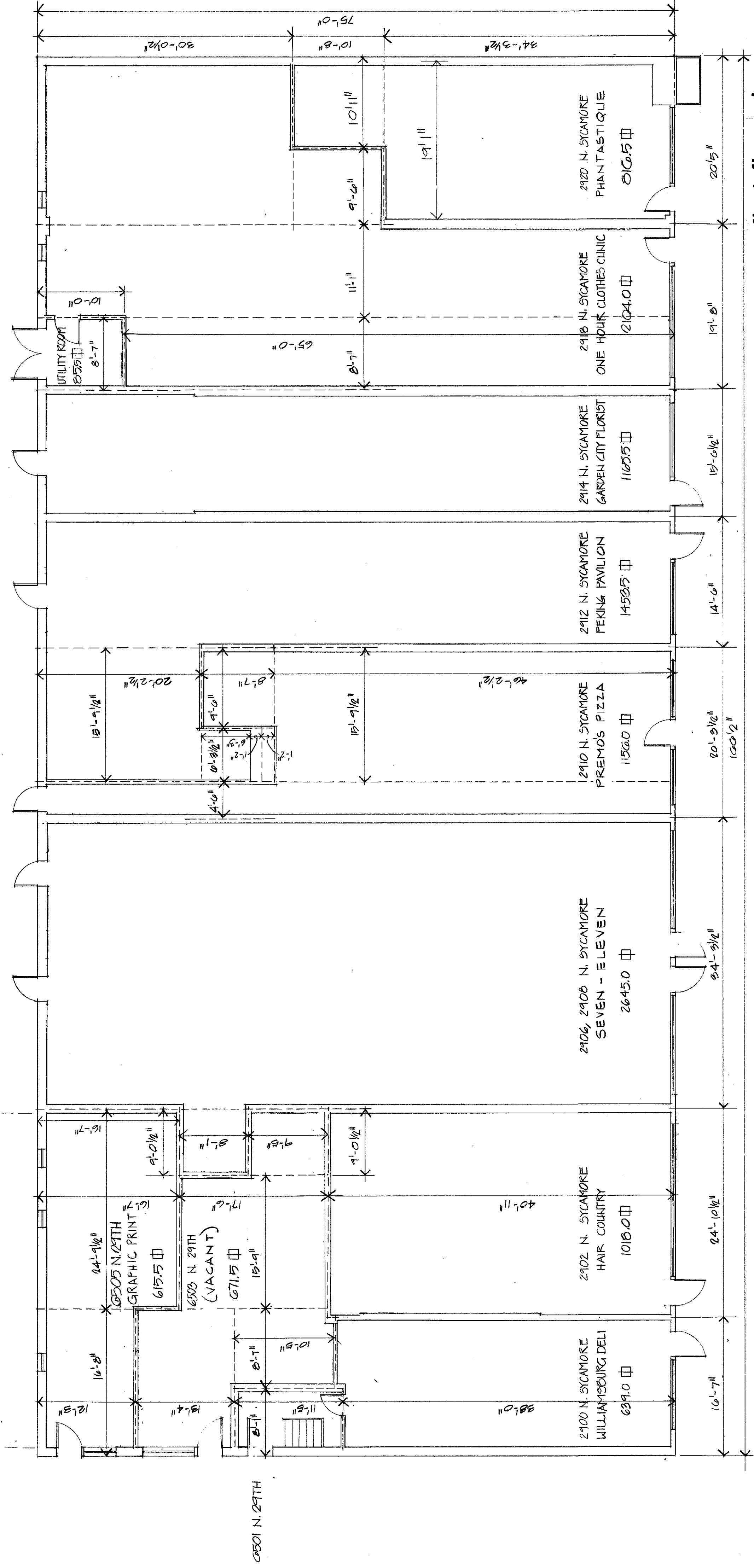


**second floor plan**  
SCALE: 1/8" = 1'-0"



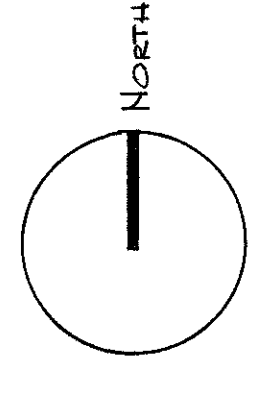
**basement plan**  
SCALE: 1/8" = 1'-0"



**first floor plan**  
SCALE: 1/8" = 1'-0"

WILLIAMSBURG SHOPPING CENTER

ADDRESS	TENANT NAME	AREA
6505 N. 29TH ST. (VACANT)	GRAPHIC PRINT	615.5
6503 N. 29TH ST.	ACTION MUSIC LTD.	671.5
6501 N. 29TH ST.		1,540.5
2900 N. SYCAMORE	WILLIAMSBURG DELI	639.0
2902 N. SYCAMORE	HAIR COUNTRY	1,018.0
2904 N. SYCAMORE	SEVEN ELEVEN	2,645.0
2906 N. SYCAMORE	SEVEN ELEVEN	2,645.0
2910 N. SYCAMORE	PREMO'S PIZZA	1,156.0
2912 N. SYCAMORE	FESING PAVILION	1,429.5
2914 N. SYCAMORE	GARBELCITY FLOREST	1,167.5
2916 N. SYCAMORE	ONE HOUR CLOTHES CLINIC	2,124.0
2918 N. SYCAMORE	UTILITY ROOM (REAR)	85.5
2920 N. SYCAMORE	PHANTASTIQUE	816.5
6500 WILLIAMSBURG BLVD. VIRGINIA COMMERCE BANK		1,781.2
6501 WILLIAMSBURG BLVD. DR. TODD DENTIST		775.9
6501 WILLIAMSBURG BLVD. BARBER SHOP		436.6
TOTAL		16,904.2 SQ. FT.
AREA OF BASEMENT LEVEL		1,448.0
AREA GROUND LEVEL		12,462.5
AREA OF SECOND LEVEL		2,233.7
TOTAL		16,904.2 SQ. FT.



**WILLIAMSBURG SHOPPING CENTER**  
16904.2 sq ft

All Measured Drawings are done to accepted standards of practice and accuracy. But, to err is human. Upon notification of discovery of errors, we will correct them. Except for such corrections, these drawings are without warranty of liability.